



8

Alberon Street, Wishart

UPCOMING AUCTION: Saturday, 14 June 2025

Time: 10am | ONSITE



Welcome Home

Traversing down the quiet, treelined enclave of Alberon Street, beyond the picturesque facade and welcoming street-appeal, be enchanted by the charming residence of Number 8.

Positioned to capture elevated breezes, breathtaking views and endless comforts for the entire family, this beautiful home offers a quintessential Queensland lifestyle from the moment you are welcomed through its doors.

Waltzing through the entrance, be greeted by the inviting ambiance of the open plan living. Continue through to the generous dining area and enormous culinary kitchen before wandering out to the expansive entertainer's deck showcasing panoramic mountain views and twinkling valley lights.

Finding a truly exceptional home offering an idyllic lifestyle in such prime location is a rarity. Seize the opportunity to call this property home.





Property Snapshot

Boasting polished timber floors, fresh painting throughout, and multiple spaces to entertain, this ideal home holds endless inclusions for the whole family to enjoy.

Rental Appraisal: \$725 - \$750 per week

- 3 bedrooms + 1 bathroom + 2 cars
- Entertaining rear deck + front porch
- Airconditioning in lounge + Master
- Low maintenance yards
- Build Year: 1970
- Land size: 546sm
- Wishart SS + Mansfield SHS catchments
- Freshly painted + polished floors
- Renovated + contemporary bathroom
- Versatile undercover area + laundry
- Rates: \$768 per quarter
- Build size: 259sm



Lifestyle and Location

Alberon Street is amongst some of Wishart's most tightly held pockets, with close-knit neighbours and growing families enjoying the quite street for generations to come.

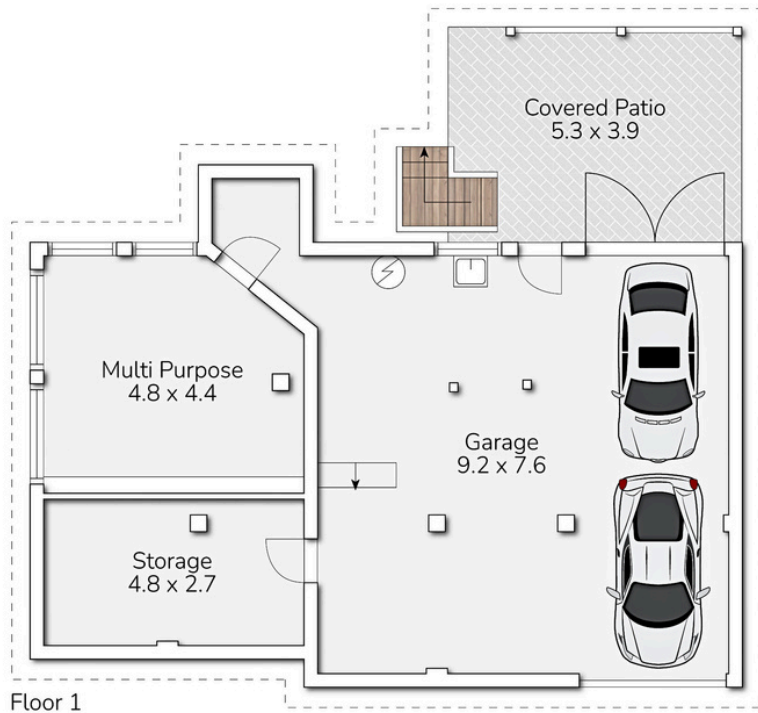
This popular location is in close proximity to reputable schools, transport and shopping precincts, making it an ideal suburb for those prioritising location, convenience and capital growth.

- Located in Wishart SS and Mansfield SHS catchments
- 400m to Brisbane Adventist College
- 950m to St Catherine's Catholic Primary
- 1.6km to Clairvaux MacKillop College
- 3.6km to Griffith University (Nathan Campus)
- 800m to Civic Fair Shops
- 1.4km to Mt Gravatt Plaza
- 1.5km to Westfield Mount Gravatt
- 5.1km to Westfield Carindale
- 13km to Brisbane CBD

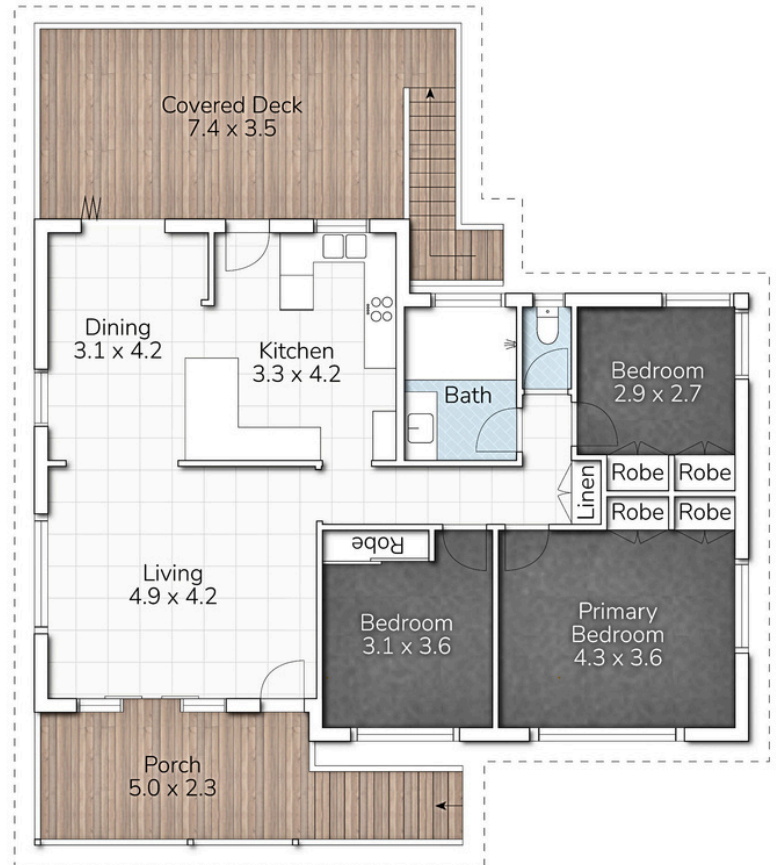
Numerous local parks, playgrounds, tracks and sporting fields in walking distance.



Floorplan



Floor 1



Floor 2

8 Alberon Street, Wishart

3 Bed 1 Bath 2 Car

Internal 102m² | Externals 157m² | Total 259m²

This floor plan is for marketing purposes only. Dimensions and layout are approximate. Mountfort Media gives no guarantee or warranty over the accuracy of this plan.



ALEXANDRA SMITH

0499 299 455
07 3347 3737
alexandra@arrivehome.com.au



KAREN PALMER

0402 520 438
07 3347 3737
karenp@arrivehome.com.au



ARRIVE